

# Charities Appeals Supplement

The Charities Appeals Supplement continues to help develop fundraising revenue streams for charities through legacies, corporate support and donation.

This section is written by charities detailing their appeals. It is easy to use with a categorised index below and an A–Z index at the end.

If your client is considering leaving a legacy to charity, please encourage them to browse through the appeals when making that important decision. Please mention the Charities Appeals Supplement when contacting a charity.

The team at the Charities Appeals Supplement would like to thank you for your continuing support; especially those who have left legacies to our featured charities over the last year.

## New Law Journal

### Classified index

#### Animals and birds

Animal Defenders International .....	CA6
Friends of the Animals .....	CA9
Humane Slaughter Association .....	CA10
Last Chance Animal Rescue .....	CA8
London Wildlife Trust .....	CA8
Lord Dowding Fund for Humane Research .....	CA4
Lord Whisky Sanctuary Fund .....	CA5
Nowzad .....	CA10
Redwings Horse Sanctuary .....	CA3
Royal Society for the Prevention of Cruelty to Animals .....	CA2
Swan Lifeline .....	CA1
Tiggywinkles – the Wildlife Hospital Trust .....	CA5
Universities Federation for Animal Welfare .....	CA6

#### Conservation

Tiggywinkles – the Wildlife Hospital Trust .....	CA5
Woodland Trust .....	CA5

#### Cultural and environmental

Woodland Trust .....	CA5
----------------------	-----

#### Education

Friends of the Animals .....	CA9
Humane Slaughter Association .....	CA10
Royal School of Church Music .....	CA1
Tiggywinkles – the Wildlife Hospital Trust .....	CA5
Universities Federation for Animal Welfare .....	CA6

#### Medical research and welfare

Blood Pressure UK .....	CA8
Breast Cancer Research Trust .....	CA3
Cancer Prevention Research Trust .....	CA4
Kidney Wales .....	CA7
Lord Dowding Fund for Humane Research .....	CA4
Royal College of Surgeons of England .....	CA3

#### Religious

Royal School of Church Music .....	CA1
------------------------------------	-----

#### Social Services and welfare

Shelter .....	CA6
---------------	-----

#### Trades and professions

Barristers' Benevolent Association .....	CA10
Royal College of Surgeons of England .....	CA3

### The Royal School of Church Music

*...transforming and inspiring worship*

Enabling the best use of music in Christian worship, whatever the resources, whatever the style.

Remember the RSCM in your will to help safeguard the future of church music and support the training of church musicians.

01722 424848  
development@rscm.com  
www.rscm.com



## SWAN LIFELINE

Swan Lifeline is the oldest registered charity devoted entirely to the care of sick and injured swans in the Thames Valley and surrounding area. Our work is possible only through generous donations and support from the public, our sponsors, trustees and volunteers. So far, we have rescued and treated more than 30,000 swans.

Cuckoo Weir Island, South Meadow Lane, Eton, Berkshire SL4 6SS  
T: 01753 859397 E: kaywebbsll@btinternet.com

[www.swanlifeline.org.uk](http://www.swanlifeline.org.uk)

Charitable Incorporated Organisation 1156995



# What will you leave to our most faithful friends?

Elsie has come a long way since she was cruelly thrown from a car window. Her new owner, Gina, adores her and can't imagine life without her best friend. That's why Gina is leaving a gift in her Will to make sure more animals like Elsie get the chance to find loving homes. Will you join Gina and help create a world where abused and abandoned animals get the care they need?



It takes all of us to create a future that's kinder to animals. Find out the difference you can make with a gift in your Will today.

For your free Gifts in Wills guide:

**Call:** 0300 123 0239

**Visit:** [rspca.org.uk/giftsinwills](https://rspca.org.uk/giftsinwills)

Proud Supporters of

**REMEMBER A CHARITY  
IN YOUR WILL WEEK**

**10-16 September 2018**



Royal Society for the Prevention of Cruelty to Animals.  
Wilberforce Way, Southwater, Horsham, West Sussex RH13 9RS.  
The RSPCA helps animals in England and Wales.  
Registered charity no. 219099. ©RSPCA 2018. All rights reserved.

**Leaving a Legacy**

## The Breast Cancer Research Trust

President –  
Dame Vera Lynn DBE, LLD, Mmus



The treatment and management of breast cancer has been revolutionised in the last 41 years since I became President of the Breast Cancer Research Trust. The death rate has fallen by 30% in the UK and many patients now experience a personal cure. This in the main has been due to unremitting and time consuming research not only into new drugs and ways of diagnosing, assessing and treating patients but into the basic causes of breast cancer itself.

It gives me great pleasure to state that to date, we have raised over five million pounds, which has enabled us to support forty major research centres throughout the United Kingdom. The Breast Cancer Research Trust is a charity dedicated to funding clinically based laboratory project research, undertaken in recognised cancer centres or research institutions in the UK, directly aimed at improving the prevention, early diagnosis and treatment of breast cancer. 100% of all donations go towards this vital research as the Trust is run on a purely voluntary basis.

By helping us, you are giving aid and hope to all women who develop this particular cancer.

Vera Lynn

**BCRT**

T: 01243 583143

E: [BCRTTrust@btinternet.com](mailto:BCRTTrust@btinternet.com)

W: [www.breastcancerresearchtrust.org.uk](http://www.breastcancerresearchtrust.org.uk)

Registered Charity No. 272214

The legacy of Amersham.

Will you remember  
the survivors?

In 2008, Redwings gave a home to over 60 survivors of the horrors of Spindle Farm, one of our largest rescues. Ten years later, 58 are still living at the Sanctuary – just like little donkey Esther.

A gift in your Will can help us care for survivors like these for decades to come.

Please remember Redwings



Call 01508 481030 or email [legacies@redwings.co.uk](mailto:legacies@redwings.co.uk)



Registered charity no 212808

Surgeons save and improve the quality of people's lives every day, and for more than 200 years, we have safeguarded standards of clinical practice, making patient care and wellbeing the heart and drive of all we do.

Our work is not limited to specific illnesses or areas of disease but supports better care for all ages, from minor day surgery and removal of cancer, to life saving emergency trauma care.

Making a will is a significant personal responsibility and just as a will brings security to those closest to you, a legacy to the RCS plays a crucial role in supporting the improvement of surgical care for patients.

Please contact us for more information or for an informal chat about how your donation or legacy could help.

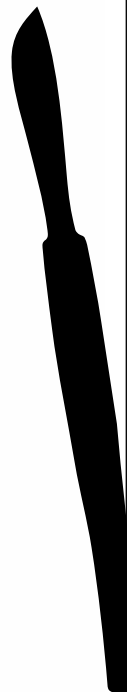
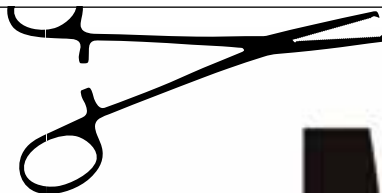
t 020 7869 6086

e [fundraising@rcseng.ac.uk](mailto:fundraising@rcseng.ac.uk)

w [www.rcseng.ac.uk/fundraising](http://www.rcseng.ac.uk/fundraising)

#surgerysaveslives

MAKE  
SURGERY  
YOUR  
LEGACY



## Help us beat cancer with your legacy



**Our sacred mission: the prevention of cancer**

**For legacies, *in memoriam* gifts and donations**

### Cancer Prevention Research Trust

231 Roehampton Lane, London SW15 4LB

Tel: 020 8785 7786 Fax: 020 8785 6466

E-mail: [cprt45@yahoo.co.uk](mailto:cprt45@yahoo.co.uk)

Registered Charity No. 265985



[www.cancerpreventionresearch.co.uk](http://www.cancerpreventionresearch.co.uk)

## Help Finance An Evolution

Will you leave a lasting legacy of compassion and help scientific advancement? The Lord Dowding Fund finances scientific and medical research without the use of animals. We believe that cruel animal techniques have no place in 21st century science.

We have supported major advances in many fields including neuroscience, cancer research, and safety testing – we developed a humane British Standard Test for the toxicity of dental fillings. Your legacy could help save the lives of animals and advance scientific research.

Help finance an evolution in medical science and leave a lasting legacy, with a bequest today to the:

**Lord Dowding Fund,  
Millbank Tower, Millbank, London SW1P 4QP**



For a **FREE** guide to making a will to help laboratory animals call us today on 020 7630 3340 or visit [www.ldf.org.uk](http://www.ldf.org.uk)



# Last year we helped over 80,000 wild birds and animals like Rudolph



*Please help me get better*

Specialising in hedgehogs, our caring teams save lives every single day of the year. Our aim is simple. To treat all injured British birds and animals, then return them to the wild. Like Rudolph, who was orphaned at Christmas time, just five days old. The road accident which killed his mother left him with three badly broken legs. Our specialist care saved this poor little deer from suffering and he is now facing a brighter future. But it is only with your support we can help casualties like Rudolph, so please remember Tiggywinkles in your Will.

Our late friend **Dame Thora Hird** was an ardent supporter of our work. She actively encouraged others to help us secure funding for our lifesaving work to continue. Your legacy will ensure help is always at hand for all British wildlife; in Dame Thora's own words, *"All the little wild creatures and I thank you so very much"*.



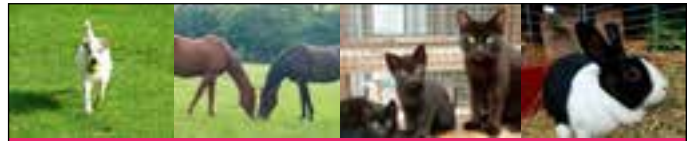
For more information please contact:  
Jenny Babb, Tiggywinkles, Aylesbury,  
Buckinghamshire HP17 8AF

**01844 292 292**  
mail@sttiggywinkles.org.uk  
www.tiggywinkles.com



is the busiest wildlife hospital in the world

Registered Charity No. 284497



## The Park House Animal Sanctuary

Supported by The Lord Whisky Sanctuary Fund  
(registered charity 283483)

Park House, Stelling Minnis, Canterbury, Kent CT4 6AN  
Tel: 01303 862622 Fax: 01303 863007  
Email: lord.whisky@btinternet.com

Founder Margaret Todd's work with animals began at a very early age when she looked after a German Shepherd called Trixie. When Trixie went back to her owner, she decided she wanted to be Margaret's best friend and escaped so many times, her owner decided to give her up. After this Margaret took many homeless animals into her parents home, nursing them back to health before finding new homes for them. In the 1970's Margaret, together with husband Ron, son Alex and daughter Tina, opened a sanctuary in Kent and became a registered charity in 1981. Since then the sanctuary's work has increased enormously, taking in all kinds of domestic and wild animals. In 1993 Margaret was awarded the MBE for her contribution to animal welfare and in 1994, a veterinary clinic for people on low income was opened, a cause very dear to Margaret's heart. Without these clinics many animals would simply go untreated. We receive no government funding and without your legacies and donations our work could not continue. Please support our work helping animals in need.

[www.lordwhisky.co.uk](http://www.lordwhisky.co.uk)

# Let your legacy grow

**Gifts in wills play a vital role in helping the Woodland Trust create, protect and restore our precious native woods.**

When you have taken care of family and friends, please consider remembering the Woodland Trust in your will - and help the woods and trees you cared about in your lifetime.

Find out more at [legacies.org.uk](http://legacies.org.uk) or call **0330 333 3300**.



The Woodland Trust is a charity registered in England and Wales no. 294344 and in Scotland no. SC038885.

## If you knew animals were being abused, could you rest in peace?



Sadly, throughout their lives, the last thing many animals experience is peace. Pepe the spider monkey, for example, was chained by his neck and imprisoned in a circus. They snapped off his canine teeth and kept him in isolation.

He was one of the lucky ones because he was rescued by Animal Defenders International (ADI). He can now live in peace with his own kind. ADI is a major international force in animal protection.

**Please help us to help other animals like Pepe to live in peace by making a bequest today to Animal Defenders International.**

**For a free guide to making a will to help stop animals being abused call us today on 020 7630 3340 or visit [www.ad-international.org](http://www.ad-international.org)**



**Animal Defenders International  
Millbank Tower, Millbank  
London, SW1P 4QP**

## Until there's a home for everyone

### Please remember Shelter in your will

Shelter helps millions of people every year struggling with bad housing or homelessness. For many, this means the difference between being forced to live in squalor and living in a safe, secure home.

Remembering Shelter in your will is one of the most important and lasting ways that you can help people to keep a roof over their heads.

**For your guide to including Shelter in your will:** call **Lucy Limb** directly on **0344 515 2062** or email **Lucy\_Limb@shelter.org.uk**

Visit [www.shelter.org.uk/legacy](http://www.shelter.org.uk/legacy) for more information.

Registered charity in England and Wales (263710) and in Scotland (SC002327). OBR-3373

**Shelter**

## Help us to prevent animal suffering

### Science in the service of animal welfare

A great many animals suffer needlessly due to our lack of knowledge and understanding of their needs and how best to meet them. UFAW is unique, promoting research and education, developing practical solutions to welfare problems and providing advice to those caring for animals and to legislators.

You can make a difference. Thanks to the generosity and support of those who share our concern for the welfare of animals, we've already achieved much. By leaving a legacy to UFAW in your Will, you'll be helping us to continue our vital work on behalf of all animals. Thank you.



**Universities Federation for Animal Welfare**

The Old School, Brewhouse Hill  
Wheathampstead, Herts AL4 8AN  
t: 01582 831818 • e: [ufaw@ufaw.org.uk](mailto:ufaw@ufaw.org.uk)

**[www.ufaw.org.uk](http://www.ufaw.org.uk)**

Registered charity no 207996





Think of us in  
your legacy  
and help us give a new life to  
kidney patients across Wales.

[kidneywales.cymru](http://kidneywales.cymru)

Kidney Wales Foundation,  
2 Radnor Court, 256 Cowbridge Road East,  
Cardiff, CF5 1GZ Tel: 029 2034 3940

Registered Charity Number 700396



# Helping others with High Blood Pressure

## Have you thought of Blood Pressure UK in your Will?

Finding out that you have high blood pressure is traumatic, particularly if you are young. Most people don't know anything about the condition and worry about how it will affect themselves and those around them.

But Blood Pressure UK is here to help, and with our information

packs, range of leaflets and our helpline, we provide reassurance and support to sufferers and their families. But all of this work is expensive and while membership subscriptions and general donations help enormously, leaving a gift in your Will can help us make a bigger difference.

It isn't complicated as you think, doesn't have to be a large amount and will give you the reassurance that our work helping fellow sufferers will continue once you have gone.

Obviously, providing for your family and friends comes first, but once that is done please consider a gift to Blood Pressure UK in your Will.

We have put together a simple leaflet to guide you through the process and you can get a copy by telephoning: (020) 7882 6255, visiting the website: [www.bloodpressureuk.org](http://www.bloodpressureuk.org), or by writing to: Blood Pressure UK, Wolfson Institute, Charterhouse Square, London, EC1M 6BQ.



**Blood Pressure UK**  
Helping you to lower your blood pressure



## Protecting London's wildlife for the future

Wildlife in the UK is declining at an alarming rate. But leaving a gift to London Wildlife Trust in your Will is a great way to make a lasting contribution to your local wildlife. These gifts, no matter how small, help us protect nature and wildlife across the capital, so that local species can thrive for generations to come.

Anyone can leave a gift to London Wildlife Trust when making a Will. It's one of the easiest and most valuable ways you can support our important work, ensuring that we can:

- Protect the wonderfully rich and diverse nature that is found across London
- Encourage local wildlife to thrive in even the most unlikely places
- Inspire children and adults to experience the joy and wellbeing that comes from connecting with nature – even in the heart of London.

To find out more please email Cathy Gale on [cgale@wildlondon.org.uk](mailto:cgale@wildlondon.org.uk) or call 020 7803 4276

[www.wildlondon.org.uk](http://www.wildlondon.org.uk)

Registered Charity Number 283895



Hedgehog © Tom Marshall

## Don't leave it to chance... leave it to LAST CHANCE



As animals can't speak for themselves it falls to me to ask you to consider leaving a legacy to Last Chance Animal Rescue. Any money that we may receive will be spent entirely on the running and improvement at the Centre, which is dedicated to the rescuing, rehabilitation and re-homing of dogs and cats etc.

Many of the number we receive have found their way to our door through circumstances such as their beloved owner passing away, may that door always be open. Many are elderly, in their twilight years, and would just love to find a caring retirement home, something we have great success and pleasure in finding for them, and we continue to care for them, young and old, long after they are settled in their new loving homes, by offering all kinds of support, including financial if needed, for their continued welfare and well being.



As you can imagine, this level of commitment doesn't come cheaply, which is why I am appealing to you to remember Last Chance if possible, when you make your will. They do say... where there's a Will there's a way!

Hartfield Road, Edenbridge, Kent TN8 5NH  
Tel: 01732 865530  
Ashford Road, New Romney, Kent TN28 8TH  
Tel: 01797 366620  
Web: [www.lastchanceanimalrescue.co.uk](http://www.lastchanceanimalrescue.co.uk)  
Reg. Charity no. 1002349

## LAST CHANCE ANIMAL RESCUE



# FRIENDS OF THE ANIMALS

Saving lives since 1990

[www.friendsoftheanimals.co.uk](http://www.friendsoftheanimals.co.uk)



## This is what we do:

Veterinary treatment provided for **3,000+** animals (last year)

**35,900** animals spayed/neutered.

**8,900+** animals re-homed.

**1,608,000** items of pet food distributed.

**440** farm animals currently being financed.

## Why we need you:

Every neglected and injured animal we save is dependent upon the kindness of a caring person. Will that be you?

**PLEASE include**  
**Friends of the Animals**  
**in your will**



# 28 YEARS OF CARING

Head Office: **Friends of the Animals** Reg Charity No: 1000249  
17A Riverway Newport PO30 5UX Tel: 01983 522 511

**In a war ravaged country, there are many forgotten victims ...**

The life of a dog in Afghanistan is a desperate one and we are their one chance.

Nowzad relieves the suffering of stray and abandoned animals and is the only recognised animal shelter and clinic in the whole of Afghanistan, but we need your support to help the animals with no voice but ours.

**... we won't forget them – will you?**

Please donate online at [www.nowzad.com/donate](http://www.nowzad.com/donate) or send cheques payable to 'Nowzad' to: Nowzad, The Meriel Suite, Hartnoll Farm Business Park, Tiverton EX16 4NG



**DONATE BY TEXT TODAY – SEND 'NOWZ07 £5' to 70070**

**You can make a lasting difference for millions of animals**

**Caring beyond the farm gate**

Around the world, millions of animals are killed for human consumption every day. However well cared for on the farm, animals are extremely vulnerable once they leave – during transport, at markets and up to the point of slaughter in abattoirs. The potential for suffering is immense.

The HSA is unique – the only UK charity totally dedicated to the humane treatment of all food animals in markets, during transport, at slaughter. You can help us make a difference for millions of animals with your support.

For more information about the HSA's work and achievements contact:



**Humane Slaughter Association**

The Old School, Brewhouse Hill  
Wheathampstead, Herts AL4 8AN

t: 01582 831919 • e: [info@hsa.org.uk](mailto:info@hsa.org.uk)

**[www.hsa.org.uk](http://www.hsa.org.uk)**

Registered Charity  
in England No 1159690:  
Charitable Incorporated  
Organisation



**THE BARRISTERS' BENEVOLENT ASSOCIATION**

The Barristers' Benevolent Association exists to support, help and comfort those members of the Bar in England and Wales and their families and dependants who are in need, in distress or in difficulties.

During the recent past we have helped barristers and their families in every circuit, often saving not only dignity but careers.

We are not nearly as well-known in the profession as we would like, and there are possibly people who qualify for our help but aren't aware of our existence... we also feel that there are other people who would be willing to contribute to the welfare of their less fortunate colleagues but who are also unaware of us.

Contact Nicky Young: [nicky@the-bba.com](mailto:nicky@the-bba.com) for further details or visit our website at [www.the-bba.com](http://www.the-bba.com)



Registered Charity No.1106768

## Animal Defenders International

Millbank Tower  
Millbank  
London  
SW1P 4QP

T: 020 7630 3340

F: 020 7828 2179

E: info@ad-international.org

W: www.ad-international.org

### Animals and birds

Animal Defenders International is a major international force in animal protection, working on such issues as the use of animals in entertainment, the worldwide traffic in endangered species and alternatives to the use of animals in research. Recent campaign successes include the introduction of a ban on the use of wild animals in Peru and Colombia.

Animal Defenders International also rescue animals in distress and, following the ban in Peru, worked with the authorities to seize and relocate over 100 animals in the biggest operation of its kind.

Help safeguard animals from cruelty by making a bequest to Animal Defenders International.

Thank you.



## Blood Pressure UK

Wolfson Institute of Preventive Medicine  
Queen Mary  
University of London  
Charterhouse Square  
London  
EC1M 6BQ

T: (020) 7882 6255

E: info@bloodpressureuk.org

W: www.bloodpressureuk.org

### Medical research and welfare

Blood Pressure UK is the UK's leading charity dedicated to lowering the nation's blood pressure to prevent disability and death from stroke and heart disease. Since October 2000 we have been making a real difference to the 16 million people affected by high blood pressure in the UK. We work to ensure that high blood pressure is at the top of everyone's health agenda: within the Government, among health professionals, in the media and for every adult in the UK. Our vision is that everyone will know their blood pressure numbers, in the same way that they know their height or weight, and take steps to keep them healthy both now and in the future. High blood pressure can be treated and prevented.

Blood Pressure UK relies on donations and legacies. Your invaluable support will help to ensure they continue its important work and make a vital difference to the lives of those at risk from the effects of high blood.



Blood Pressure UK

## Barristers' Benevolent Association

14 Gray's Inn Square  
London  
WC1R 5JP

T: 020 7242 4761

F: 020 7831 5366

E: susan@the-bba.com

W: www.the-bba.com

Registered charity no: 1106768. Company limited by guarantee: 5284271

### Trades and professions

The Barristers' Benevolent Association exists to support, help and comfort those members of the Bar in England and Wales and their families and dependants who are in need, in distress or in difficulties.

During the recent past we have helped barristers and their families in every circuit, often saving not only dignity but careers.

We are not nearly as well-known in the profession as we would like, and there are possibly people who qualify for our help but aren't aware of our existence... we also feel that there are other people who would be willing to contribute to the welfare of their less fortunate colleagues but who are also unaware of us.

Contact Nicky Young (nicky@the-bba.com) for further details or visit our website at www.the-bba.com



## Breast Cancer Research Trust

PO Box 861

Bognor Regis

PO21 9HW

T: 01243 583143

E: BCRTrust@btinternet.com

W: www.breastcancerresearchtrust.org.uk

President – Dame Vera Lynn DBE, LLD, Mmus

Registered charity no: 272214

### Medical research and welfare

The treatment and management of breast cancer has been revolutionised in the last 41 years since I became President of the Breast Cancer Research Trust. The death rate has fallen by 30% in the UK and many patients now experience a personal cure. This in the main has been due to unremitting and time consuming research not only into new drugs and ways of diagnosing, assessing and treating patients but into the basic causes of breast cancer itself.

It gives me great pleasure to state that to date, we have raised over five million pounds, which has enabled us to support forty major research centres throughout the united Kingdom.

The Breast Cancer Research Trust is a charity dedicated to funding clinically based laboratory project research, undertaken in recognised cancer centres or research institutions in the UK, directly aimed at improving the prevention, early diagnosis and treatment of breast cancer. 100% of all donations go towards this vital research as the Trust is run on a purely voluntary basis

The great advances that have been made in the treatment and management of breast cancer have been achieved by the dedicated efforts of all the professionals working in this vital field.

By helping us, you are giving aid and hope to all women who develop this particular cancer.



The next issue of the Charities Appeals Supplement will appear in the 28 September 2018 issue of *New Law Journal*.



To advertise, please contact :  
advertisingsales@lexisnexis.co.uk

## Cancer Prevention Research Trust

231 Roehampton Lane  
London  
SW15 4LB  
T: 020 8785 7786  
F: 020 8785 6466  
E: cprrt45@yahoo.co.uk  
W: www.cancerpreventionresearch.co.uk  
Registered charity no: 265985

### Medical research and welfare

The Cancer Prevention Research Trust's dream is to create a better world without cancer and to promote a healthier lifestyle for all. Since its inception in 1973, the Cancer Prevention Research Trust has supported pioneering research into the prevention of this serious disease.

There is nothing more important to us or to future generations than a world without cancer, so including us in your Will is a very effective way to be part of our continuing work and will help us pursue our dream.



## Humane Slaughter Association

The Old School, Brewhouse Hill  
Wheathampstead  
Herts AL4 8AN  
T: 01582 831919  
F: 01582 831414  
E: info@hsa.org.uk  
W: www.hsa.org.uk  
Registered Charity in England no 1159690 : Charitable Incorporated Organisation



### Animals and birds / Education

The HSA is the only charity working exclusively to improve the welfare of animals raised for food when they are at their most vulnerable – in markets, during transport and at the slaughterhouse.

For 100 years the HSA has helped to prevent the suffering of animals at these times, working to ensure that high welfare standards are developed and used beyond the farm gate.

Practical and lasting improvements are achieved through education, training, technical and best practice developments – working with road hauliers, market workers, slaughterhouse staff, retailers, and agricultural and veterinary students. Additionally, award schemes are run each year and grants are made in support of projects that lead to worthwhile improvements in welfare.

As an independent registered charity, the HSA relies on donations and legacies to continue this vital work. By supporting the HSA you can make a lasting and practical difference to the welfare of millions of animals.

## Friends of the Animals

17a Riverway  
Newport  
Isle of Wight  
PO30 5UX  
T: 01983 522 511  
Registered charity no: 1000249



### Animals and birds / Education

Your wish to help animals will be assured by including a gift in your will to "Friends of the Animals".

The primary objective of the Charity is to help animals NOW, we do not 'sit on funds'. Concentrating on 'preventative' work such as spays, neuters, inoculations, boosters and free engraved discs; we never destroy a healthy animal and keep admin costs to a minimum.

We have:-

- ▶ Opened four branches.
- ▶ Re-homed 8,900+ animals.
- ▶ Built stables for donkeys and ex-pit ponies.
- ▶ Distributed over 1,608,000 items of pet food.
- ▶ Supplied almost 20,000 engraved, identity discs FOC.
- ▶ Given numerous educational talks on animal welfare.
- ▶ Wormed and inoculated thousands of animals – many for the first time in their lives!
- ▶ Stepped in to ensure food, safety and new homes for 97 Urban Farm animals, when their owner went out of business.
- ▶ Spayed/neutered 35,900 animals – which has prevented thousands of unwanted animals from being born into a largely uncaring world.

Currently funding 440 rescued farm animals.

The majority of animals that come into our care arrive in a poor state. Our reward is seeing those same animals go to their new home a few weeks later: well fed, groomed, wormed, inoculated and neutered.

VETERINARY TREATMENT is – and always has been – BY FAR OUR BIGGEST OUTGOING. You have many choices of Charities to support but no one appreciates it more – or tries harder than we do – to get the very best possible from every penny donated. Your help today will ensure a happier tomorrow for countless animals. I send my grateful thanks.

*Helen Sinclair MBE (Founder)*

## Kidney Wales

2 Radnor Court (CCUK)  
256 Cowbridge Road East  
Cardiff CF5 1GZ  
T: 029 2034 3940  
E: office@kidneywales.cymru  
W: www.kidneywales.cymru  
RCN: 700396



### Medical research and welfare

**Kidney Wales supporting families, changing lives and leading the way in the fight against kidney disease.**

Kidney Wales invests in renal research, patient care and well-being, and actively works with and on behalf of kidney patients and their families across Wales.

With your support Kidney Wales has:

- ▶ Refurbished and modernised the Children's Kidney Centre at the University Hospital of Wales
- ▶ Provided vital life saving equipment to Renal Units in Wales
- ▶ Supported Key Posts in Dialysis Centres and the Children's Kidney Centre
- ▶ Established a New Renal Research Fund
- ▶ Provided Dialysis Centres and Transplant Units with multimedia installations
- ▶ Launched a patient information, support and learning website peoplelikeuscymru.org

Please think of us in your legacy and help us make tomorrow a better and brighter day for the many families that need your support.

Please mention *New Law Journal* when responding to advertisers

## Last Chance Animal Rescue

Head office:  
Hartfield Road  
Edenbridge  
Kent TN8 5NH  
T: 01732 865530  
F: 01732 865838  
E: [general@lastchanceanimalrescue.co.uk](mailto:general@lastchanceanimalrescue.co.uk)  
W: [www.lastchanceanimalrescue.co.uk](http://www.lastchanceanimalrescue.co.uk)  
Also at: Ashford Road, New Romney TN28 8TH  
T: 01797 366620  
Registered charity no: 1002349

### Animals and birds

*Don't leave it to chance . . . leave it to LAST CHANCE*

As animals can't speak for themselves it falls to me to ask you to consider leaving a legacy to Last Chance Animal Rescue.

Any money that we may receive will be spent entirely on the running and improvement of the Centre which is dedicated to the rescuing, rehabilitating and rehoming of dogs and cats etc.

Many of the number we receive have found their way to our door through circumstances such as their beloved owner passing away. May that door always be open.

Many are elderly, in their twilight years, and would just love to find a caring retirement home: something we have great success and pleasure in finding for them, and we continue to care for them, young and old, long after they are settled in their new loving homes by offering all kinds of support, including financial if needed, for their continued welfare and well being. As you can imagine this level of commitment doesn't come cheaply, which is why I am appealing to you to remember Last Chance if possible, when you make your Will.

If you would like us to take care of your pets in your absence please remember to include instructions to this effect and if possible inform us of your wishes.

I hope you will consider us a worthy charity. It would be wonderful to think that with your help, Last Chance could always be there to pick up the pieces in times of need. They do say where there's a Will there's a way!



## Lord Dowding Fund for Humane Research

Millbank Tower  
Millbank  
London  
SW1P 4QP  
T: 020 7630 3340  
F: 020 7828 2179  
E: [info@ldf.org.uk](mailto:info@ldf.org.uk)  
W: [www.ldf.org.uk](http://www.ldf.org.uk)

### Animals and birds / Medical research and welfare

The Lord Dowding Fund supports better methods of scientific and medical research which replace the use of animals.

Since being founded in 1973, the Lord Dowding Fund has awarded grants to researchers working in a wide range of fields including breast and lung cancer, microsurgery, Parkinson's disease, cataracts, toxicity testing of dental fillings, cot deaths, product safety testing, kidney research, schizophrenia, biotechnology, hepatitis B, pain, infertility, tissue engineering and vascular disease.

It is a myth that animals are indispensable to research. We can have solid, scientific medical research without making animals suffer for progress. The Lord Dowding Fund can save animals and help people, but only with your generous support.

Thank you.



## Lord Whisky Sanctuary Fund

Park House  
Stelling Minnis  
Near Canterbury  
Kent  
CT4 6AN  
T: 01303 862622  
F: 01303 863007  
E: [lord.whisky@btinternet.com](mailto:lord.whisky@btinternet.com)

### Animals and birds

The Lord Whisky Sanctuary Fund is a lifeline for animals of all kinds.

We provide sanctuary to animals who become homeless or who have been injured or abused and vital veterinary care to those on low incomes. We also provide cattery/kennel facilities for your pets whilst you are away from home.

Lord Whisky was named after a Jack Russell who came to live at the Sanctuary when he was four years old, having had six previous homes. He lived with the founder, Margaret Todd, and her family until he had to be put down at the age of 22. Because of his personality it was decided to name the charity after him.

Since then there have been hundreds of 'Lord Whisky's' plus cats, rabbits, horses and donkeys, many of whom go on to loving homes. Others who, like Lord Whisky, have special needs remain at the Sanctuary for the rest of their lives, enjoying the lovely Kent countryside.

The charity receives no government funding and relies entirely on donations and legacies to continue its contribution to helping animals and owners.

The aims are adhered to without exception and the interest of each individual animal is our primary concern. Expediency is never a consideration and each animal is welcome to stay in our care for as long as it takes for that special home to come. We make no apology for looking for the right homes for each animal and not animals for people. This does, of course, work to the advantage of the new owner

No animal accepted is ever destroyed.



## London Wildlife Trust

Dean Bradley House  
52 Horseferry Road  
London SW1P 2AF  
T: 020 7261 0447  
E: [cgale@wildlondon.org.uk](mailto:cgale@wildlondon.org.uk)  
W: [www.wildlondon.org.uk](http://www.wildlondon.org.uk)  
Registered charity no: 283895

### Animals and birds

Wildlife in the UK is declining at an alarming rate. But leaving a gift to London Wildlife Trust in your Will is a great way to make a lasting contribution to your local wildlife. These gifts, no matter how small, help us protect nature and wildlife across the capital, so that local species can thrive for generations to come.

Anyone can leave a gift to London Wildlife Trust when making a Will. It's one of the easiest and most valuable ways you can support our important work, ensuring that we can:

- ▶ Protect the wonderfully rich and diverse nature that is found across London
- ▶ Encourage local wildlife to thrive in even the most unlikely places
- ▶ Inspire children and adults to experience the joy and wellbeing that comes from connecting with nature – even in the heart of London

To find out more please email Cathy Gale on [cgale@wildlondon.org.uk](mailto:cgale@wildlondon.org.uk) or call 020 7803 4276.



## Nowzad

The Meriel Suite  
Hartnoll Farm Business Centre  
Post Hill  
Tiverton  
EX16 4NG  
T: 07583 812 091  
W: www.nowzad.com  
Registered Charity: 1119185



### Animals and birds

Often when our military are serving in a warzone they find themselves rescuing one of the many stray dogs or cats that are struggling to survive there.

These soldiers are not only a salvation for the animal; the dog or cat are 'lifelines' to their soldier, providing a respite from war, a moment of peace, home and love. When their tour is over, leaving their battle buddy behind is unthinkable.

To date, the Nowzad charity have reunited over 1200 soldiers with the dogs and cats that they've rescued from warzones.

And there's more... Nowzad is the only official animal shelter in the whole of Afghanistan, and last year we opened up the first ever Donkey Sanctuary there.

Nowzad receives no government or large-scale funding. All our work is funded by the generous public, who are passionate about making a difference for the animals of Afghanistan, with no voice but ours.

## Redwings Horse Sanctuary

Hapton  
Norwich  
Norfolk  
NR15 1SP  
T: 01508 481030  
F: 0870 458 1947  
E: legacies@redwings.co.uk  
W: www.redwings.org.uk  
Registered charity no: 1068911



### Animals and birds

Redwings believes that every horse, pony, donkey and mule has the right to a happy and healthy life, free of fear and neglect.

The 100% publicly funded charity rescues neglected and abandoned horses from all over the country, giving them a safe place to live for the rest of their days, and is currently home to over 1,500 – making Redwings the UK's largest horse sanctuary.

As well as providing a place of sanctuary to rescued horses, Redwings has five visitor centres in England and Scotland that enable supporters to see how their kind donations really can make a difference to horses and donkeys in need.

Redwings' Aylsham Visitor Centre in North Norfolk was funded by the gifts people had left in their Wills and has been vital in enabling the charity to continue to provide homes for the increasing number of abandoned horses in desperate need of love and care.

Gifts in Wills make up the largest proportion of Redwings' income and the charity simply wouldn't be able to exist without them. Remembering Redwings Horse Sanctuary in your Will is a wonderful way to support the charity's work and leave a lasting legacy that will help them to help horses and donkeys for generations to come. Whether your gift is large or small, every donation makes a real difference to the future of Redwings' residents.

## Royal College of Surgeons of England

35–43 Lincoln's Inn Fields  
London  
WC2A 3PE  
T: 020 7869 6086  
E: fundraising@rcseng.ac.uk  
W: www.rcseng.ac.uk/support-our-work  
Registered charity no: 212808



### Medical research and welfare / Trades and professions

*'You can help our operation be a success'*

With 4.2 million surgical operations carried out every year in England alone our aim to maintain and advance surgical standards in patient care has never been so important. Some operations are minor, while others are life-saving or will dramatically enhance the quality of life. In every case, the patient places their trust in the hands of the surgeon. A registered charity, The Royal College of Surgeons of England exists to drive forward standards in patient care.

Saving lives, the relief of pain and improved quality of life through surgery is the result of research, education and training into new techniques, technology and the understanding of disease. To fund these vitally important programmes the College relies heavily on legacies and personal gifts from friends and supporters who share our aims.

Please support The Royal College of Surgeons of England with a legacy gift in your Will and help us train and equip the surgeons of the future.

The College is delighted to provide speakers at local and national events to talk about present advances in surgery, the history of surgery or topics of particular interest or concern.

For further information on presentations or making a legacy gift, please contact Nicola Extance-Vaughan at the above address.

## Royal School of Church Music

19 The Close  
Salisbury  
SP1 2EB  
T: 01722 424851  
F: 01722 4242849  
E: development@rscm.com  
W: https://www.rscm.com/support-us/rscm-legacy-society/  
Registered charity no: 312828



### Religious / Education

The Royal School of Church Music (RSCM) is an ecumenical Christian charity committed to promoting the study, practice and improvement of music in Christian worship.

We support clergy, musicians and lay people to achieve a deeper understanding of how music can enhance worship, and we provide education and training for all who contribute to music in worship to serve their churches and worshipping communities well. As a leading publisher of church music, the RSCM is able to sustain, develop and make available the broad repertoire that makes up church music today. Further, the RSCM supports a world-wide membership of churches, schools and individuals, and is itself sustained by thousands of donors and volunteers worldwide.

Any one of us can make a lasting and significant contribution to the Royal School of Church Music. Our legacy donors come from all walks of life but are united by a desire to make a difference to church music far beyond their own lifetimes. The bequests that they make, big or small, support the churches, musicians, and congregations that they leave behind.

## Royal Society for the Prevention of Cruelty to Animals

Wilberforce Way  
Southwater  
Horsham  
West Sussex  
RH13 9RS

T: 0300 123 0239

E: [giftsinwills@rspca.org.uk](mailto:giftsinwills@rspca.org.uk)

W: [rspca.org.uk/giftsinwills](http://rspca.org.uk/giftsinwills)

### Animals and birds

#### Create a future that is kinder to animals with a Gift in your Will

Back in 1824, we vowed never to tolerate cruelty to or abuse of any animal. And thanks to public donations, we're continuing to keep that promise. However, without gifts in Wills, we wouldn't be able to. They fund more than 50 percent of the work we do to rescue, rehabilitate and rehome animals – so they're hugely important.

Remembering the RSPCA in your Will means you'd be leaving behind a wonderful legacy. You'd be helping to make sure we're always there for animals.

So if you're thinking which charity you'd like to leave a Gift in your Will to, please consider the RSPCA – and let's create a future that is kinder to animals. Thank you.

For your free Gifts in Wills guide, please call: 0300 123 0239 or visit: [rspca.org.uk/giftsinwills](http://rspca.org.uk/giftsinwills)



## Swan Lifeline

Cuckoo Weir Island  
South Meadow Lane  
Eton

Berkshire

SL4 6SS

T: 01753 859397

E: [kaywebbsll@btinternet.com](mailto:kaywebbsll@btinternet.com)

W: [www.swanlifeline.org.uk](http://www.swanlifeline.org.uk)

Charitable Incorporated Organisation 1156995

### Animals and birds

Entirely funded by donations, legacies form a significant part of our income which enables us to rescue and treat sick and injured swans. If necessary after rescue, swans are admitted to the purpose built Headquarters in Eton, Berkshire.

Specialist veterinary treatment is given as required with follow up care provided by trained staff. The majority of the work is carried out by volunteers under supervision of the centre co-ordinator. Swans are released back to the wild as soon as possible after recovery, with a small number of permanently disabled birds being released to sheltered private lakes. Registered as a Charity for over 32 years, many thousands of swans have been rescued and treated.



## Shelter

88 Old Street  
London  
EC1V 9HU

T: 0344 515 2062

E: [lucy\\_limb@shelter.org.uk](mailto:lucy_limb@shelter.org.uk)

W: [www.shelter.org.uk/legacy](http://www.shelter.org.uk/legacy)

Registered Charity in England and Wales (263710)

and in Scotland (SC002327)

### Social services and welfare

Britain is in a housing crisis. Times are tough, rents are rising, and many families are struggling to keep a roof over their heads, let alone get on the property ladder. For others, redundancy or illness can make people fall behind on the rent or mortgage. And every day, millions of people wake up in housing that's run down, overcrowded or dangerous.

At Shelter, we hear from people suffering from health problems and mental health issues, such as depression and stress, and families whose children are missing out on their education or are being bullied – all as a result of bad housing or homelessness.

That's why we provide free, confidential advice and support via our website, helplines, and face to face local services. We help people to find and keep a home in a place where they can thrive, and we tackle the root causes of bad housing by campaigning for new laws, policies and solutions.

#### Shelter believes everyone should have a home

To continue this work, we rely heavily on the gifts that supporters leave us in their wills. That's why remembering Shelter in your will is one of the most important ways that you can help.

For your guide to including Shelter in your will, please call Lucy Limb directly on 0344 515 2062 or email [lucy\\_limb@shelter.org.uk](mailto:lucy_limb@shelter.org.uk).

Visit [www.shelter.org.uk/legacy](http://www.shelter.org.uk/legacy) for more information.



## Tiggywinkles — the Wildlife Hospital Trust

Aston Road  
Haddenham

Aylesbury

Bucks

HP17 8AF

T: 01844 292292

F: 01844 292640

E: [mail@sttiggywinkles.org.uk](mailto:mail@sttiggywinkles.org.uk)

W: [www.tiggywinkles.com](http://www.tiggywinkles.com)

President: The Countess of Buckinghamshire

Registered charity no: 286447

### Animals and birds / Conservation / Education

Specialising in hedgehogs, Tiggywinkles, The Wildlife Hospital Trust, has been working for over 35 years rescuing, treating and rehabilitating sick, injured and orphaned British wildlife. We have proved beyond doubt that most wild animal and bird casualties can be saved and released back to the wild.

The wealth of expertise and knowledge in the care of a wide range of species, much of it previously unrecorded, can now be passed on to others. Our commitment to practical education plays a vital part in the future conservation of wildlife and as an accredited centre opportunities are now available for 16+ years' to gain a City and Guilds qualification in animal care.

Les Stocker, Founder of Tiggywinkles, sadly passed away in 2016. Throughout his life he was awarded the title of 'Laureate' in the International 1990 Rolex Awards for Enterprise for his work in wildlife conservation and establishing Europe's first Wildlife Teaching Hospital. This was the first environmental Laureate to be awarded to a project based in Britain. He was also awarded an MBE by her Majesty The Queen and, more recently, the prestigious Honorary Associateship of the Royal College of Veterinary Surgeons. Les will be truly missed by all in the world of British wildlife care, though his legacy and passion lives on through the amazing Tiggywinkles team, who continue to care for over 10,000 wild patients each year.

Dependency on public compassion underpins the work of a committed team of veterinary staff and volunteers dedicated to providing the best care and medical expertise for their patients.



To advertise in *New Law Journal*, please contact:

[advertisingsales@lexisnexis.co.uk](mailto:advertisingsales@lexisnexis.co.uk)

We need your help to expand our work enabling us to save more of Britain’s deer, badgers, hedgehogs, owls; in fact all British wild creatures. For this work to grow and thrive it is your legacy that will help forge a secure path for wild animals and birds for many years to come. Please think about ensuring their security.

We are happy to commemorate all who generously remember the Wildlife Hospital Trust in their wills by inscribing their name on a plaque in our Remembrance Garden. Your gifts are also welcome in the form of a donation or by becoming a friend of Tiggywinkles.

PLEASE, HELP US HELP THEM.

### Universities Federation for Animal Welfare (UFAW)



The Old School  
Brewhouse Hill  
Wheathampstead  
Hertfordshire  
AL4 8AN

T: 01582 831818  
F: 01582 831414

E: ufaw@ufaw.org.uk  
W: www.ufaw.org.uk

Registered in England Charity No: 207996

#### Animals and birds / Education

UFAW is an internationally-recognized, independent, scientific and educational animal welfare charity concerned with promoting high standards of animal welfare. It works to improve animal lives by:

- ▶ promoting and supporting developments in the science and technology that underpin advances in animal welfare
- ▶ promoting education in animal care and welfare
- ▶ providing information, organizing meetings, and publishing books, videos, articles, technical reports and the leading scientific journal *Animal Welfare*
- ▶ providing expert advice to government departments and other bodies and by helping to draft and amend laws and guidelines.

UFAW believes that by making rational judgements based upon scientific study, lasting advances can be made in the way we look after animals.

For UFAW to continue improving the way animals are treated and cared for around the world, your support is essential. Please help us to continue this important work through a donation or legacy.

Thank you.

### Woodland Trust

Kempton Way  
Grantham  
Lincolnshire  
NG31 6LL

T: 0330 333 3300

E: legacies@woodlandtrust.org.uk

W: www.legacies.org.uk

Registered charity no: England & Wales 294344;

Scotland SC038885

#### Conservation / Cultural and environmental

Since 1972, the Woodland Trust has been saving threatened ancient woods and creating new areas of native woodland throughout the UK. We care for over 1,000 woods and have planted millions of native trees – more than any other UK conservation organisation.

With tree disease, climate change and development threats, protecting the future of our precious woodland is more urgent than ever.

Gifts kindly left in wills provide more than a quarter of our total funding and have enabled us to:

- ▶ plant hundreds of thousands of trees for the future
- ▶ protect hundreds of acres of precious ancient woodland
- ▶ inspire new generations to enjoy and nurture woods and wildlife

Choosing to remember the Woodland Trust in this special way will leave a lasting living legacy. Your gift could help save our richest habitat, supporting vulnerable wildlife and fighting global climate change. It could enable future generations to create their own magical childhood memories, to relax and connect with nature.

After you have taken care of family and friends, please consider remembering the Woodland Trust in your will – and help ensure that the woods and trees you care about survive.

Find out more at legacies.org.uk or call 0330 333 3300.



## Alphabetical index

<b>A</b>	
Animal Defenders International .....	CA6
<b>B</b>	
Barristers’ Benevolent Association .....	CA10
Blood Pressure UK .....	CA8
Breast Cancer Research Trust .....	CA3
<b>C</b>	
Cancer Prevention Research Trust .....	CA4
<b>F</b>	
Friends of the Animals .....	CA9
<b>H</b>	
Humane Slaughter Association .....	CA10
<b>K</b>	
Kidney Wales .....	CA7
<b>L</b>	
Last Chance Animal Rescue .....	CA8
London Wildlife Trust .....	CA8
Lord Dowding Fund for Humane Research .....	CA4
Lord Whisky Sanctuary Fund .....	CA5
<b>N</b>	
Nowzad .....	CA10
<b>R</b>	
Redwings Horse Sanctuary .....	CA3
Royal College of Surgeons of England .....	CA3
Royal School of Church Music .....	CA1
Royal Society for the Prevention of Cruelty to Animals .....	CA2
<b>S</b>	
Shelter .....	CA6
Swan Lifeline .....	CA1
<b>T</b>	
Tiggywinkles – the Wildlife Hospital Trust .....	CA5
<b>U</b>	
Universities Federation for Animal Welfare .....	CA6
<b>W</b>	
Woodland Trust .....	CA5